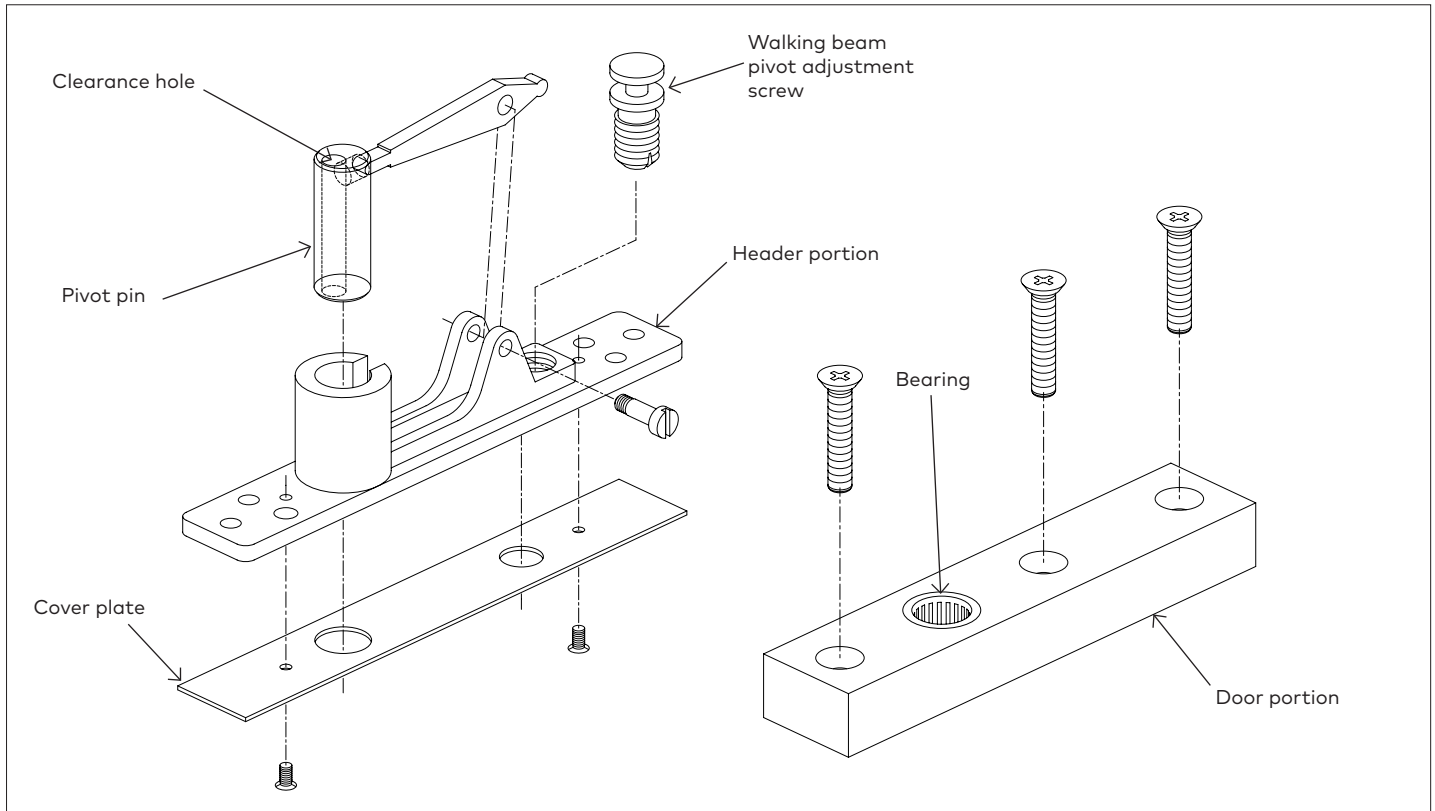


Installation Instructions

Heavy Duty Center Hung Top Pivot For use with HD8062

1.1 Install pivot

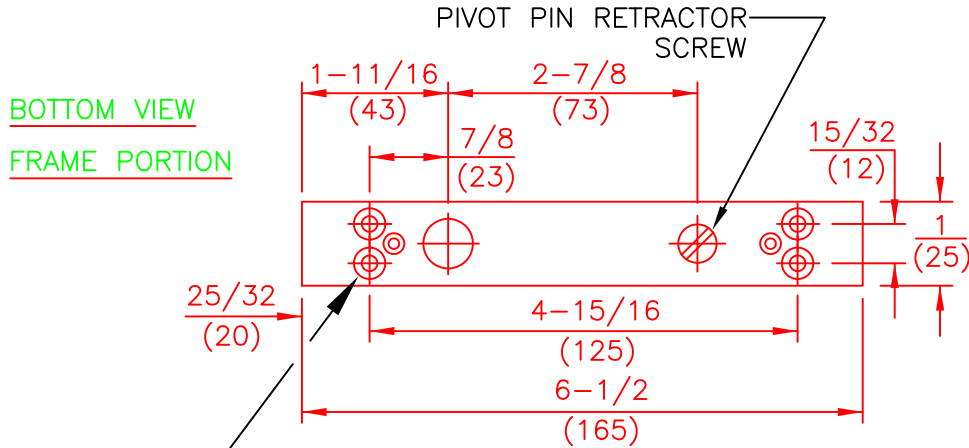
Fig. 1



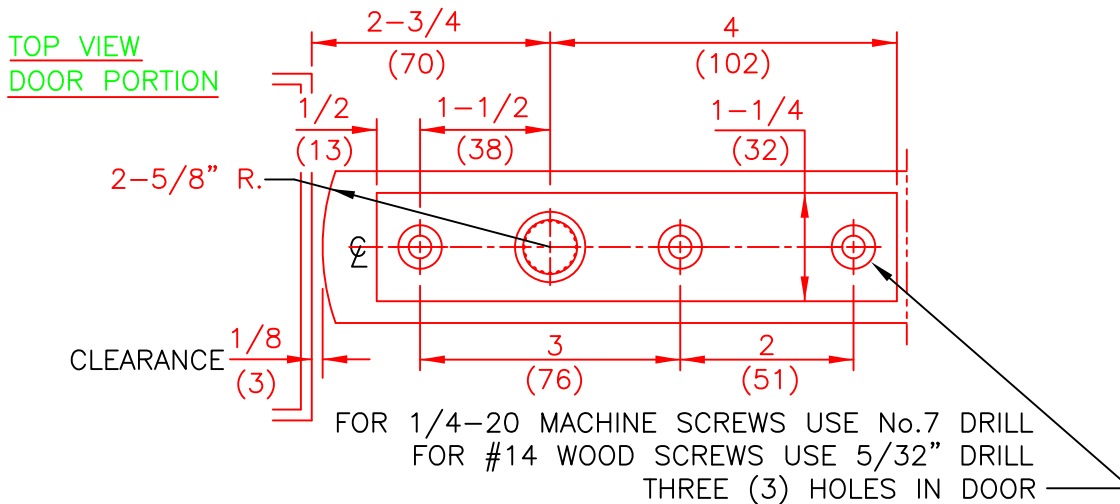
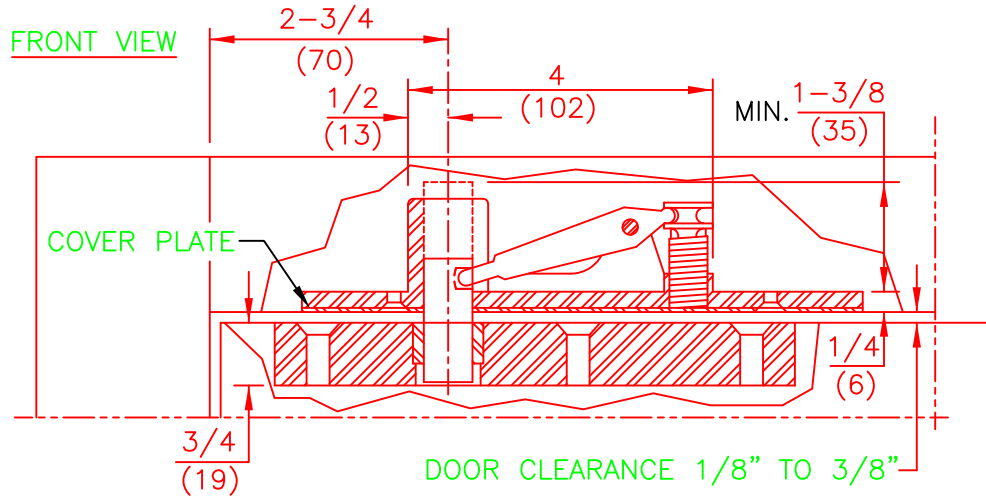
- | | |
|---|---|
| <ul style="list-style-type: none"> 1.1.1 Prepare door and header according to template. 1.1.2 Fasten header portion of pivot. 1.1.3 Fasten cover plate. 1.1.4 Fully retract pivot pin by turning adjustment screw counter-clockwise. 1.1.5 Fasten door portion of pivot. | <ul style="list-style-type: none"> 1.1.6 Place bottom of door on floor spindle or floor bearing. 1.1.7 Raise door to a near verticle position. 1.1.8 Rotate door to approximately 90° position. 1.1.9 Align bearing with pivot pin in header. 1.1.10 Engage pivot pin fully by turning adjustment screw clockwise. |
|---|---|

NOTES

1. DO NOT SCALE DRAWING.
2. DIMENSIONS ARE IN INCHES/(MM).
3. ALL NECESSARY REINFORCING FOR PIVOTS BY OTHERS.
4. PIVOT PIN DIAMETER .625.



FOR 10-32 MACHINE SCREWS USE No.21 DRILL
 FOR WOOD SCREWS USE No.29 DRILL
 FOUR (4) HOLES FOR MOUNTING PIVOT

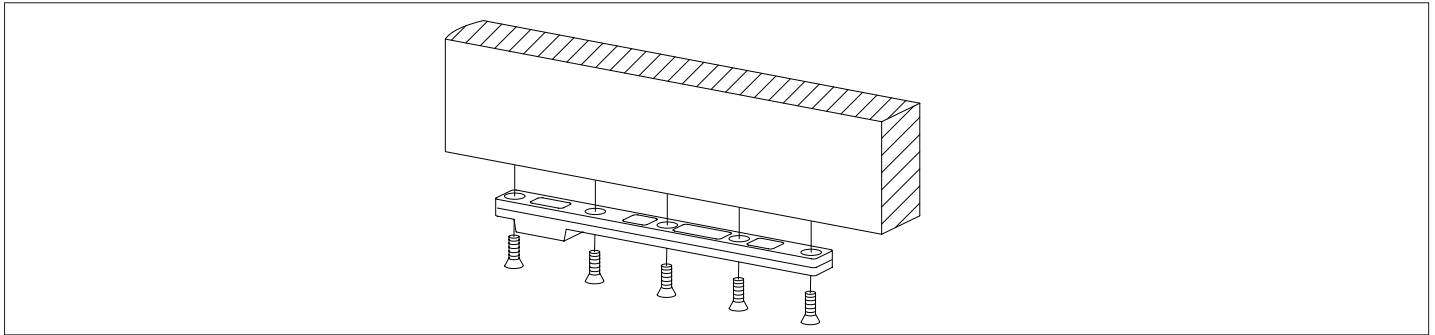


Installation Instructions

Center Hung Bottom Arm 7421

1.1 Install bottom arm (7421)

Fig. 1

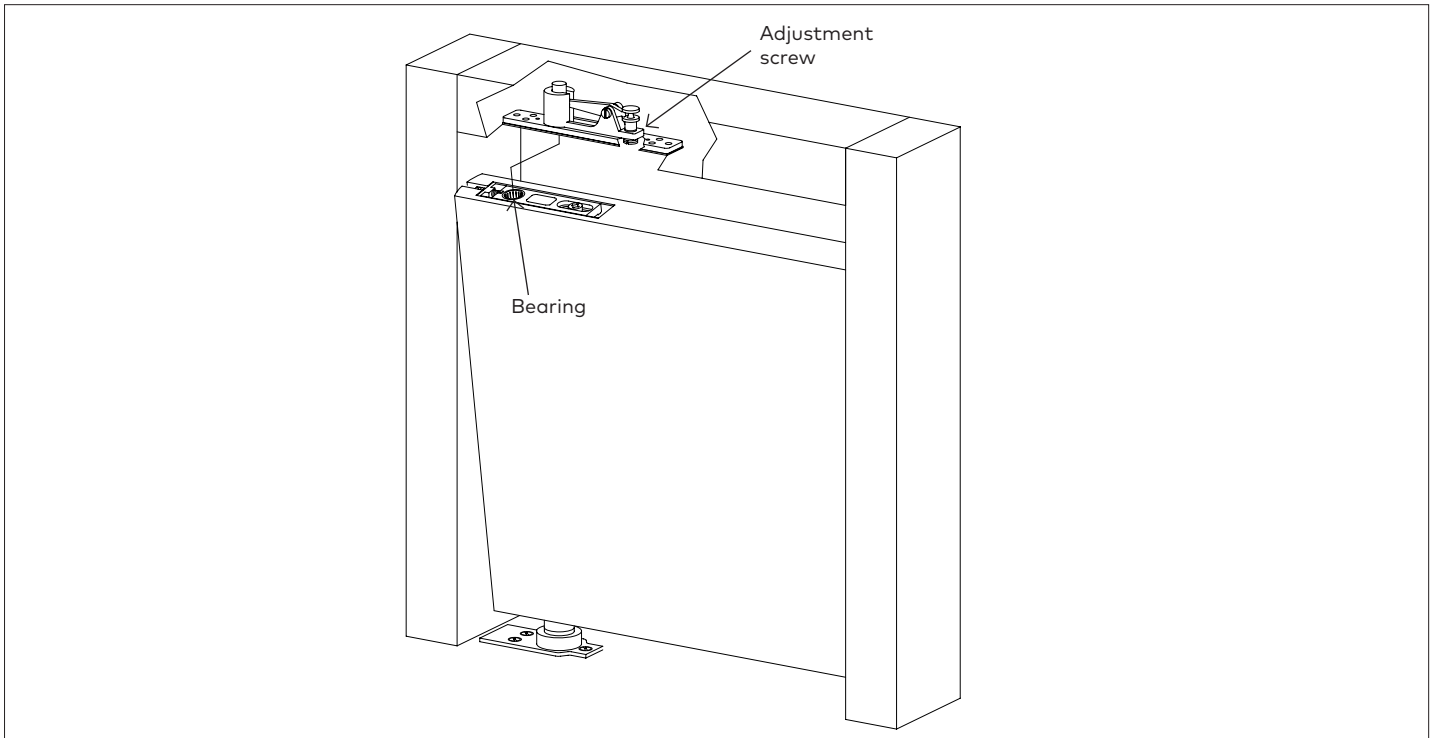


1.1.1 Prepare door according to template.

1.1.2 Attach arm to bottom of door with 5 wood or machine screws.

1.2 Install door

Fig. 2



1.2.1 With door parallel to frame, place bottom arm onto spindle.

1.2.2 Rotate door approximately 90°.

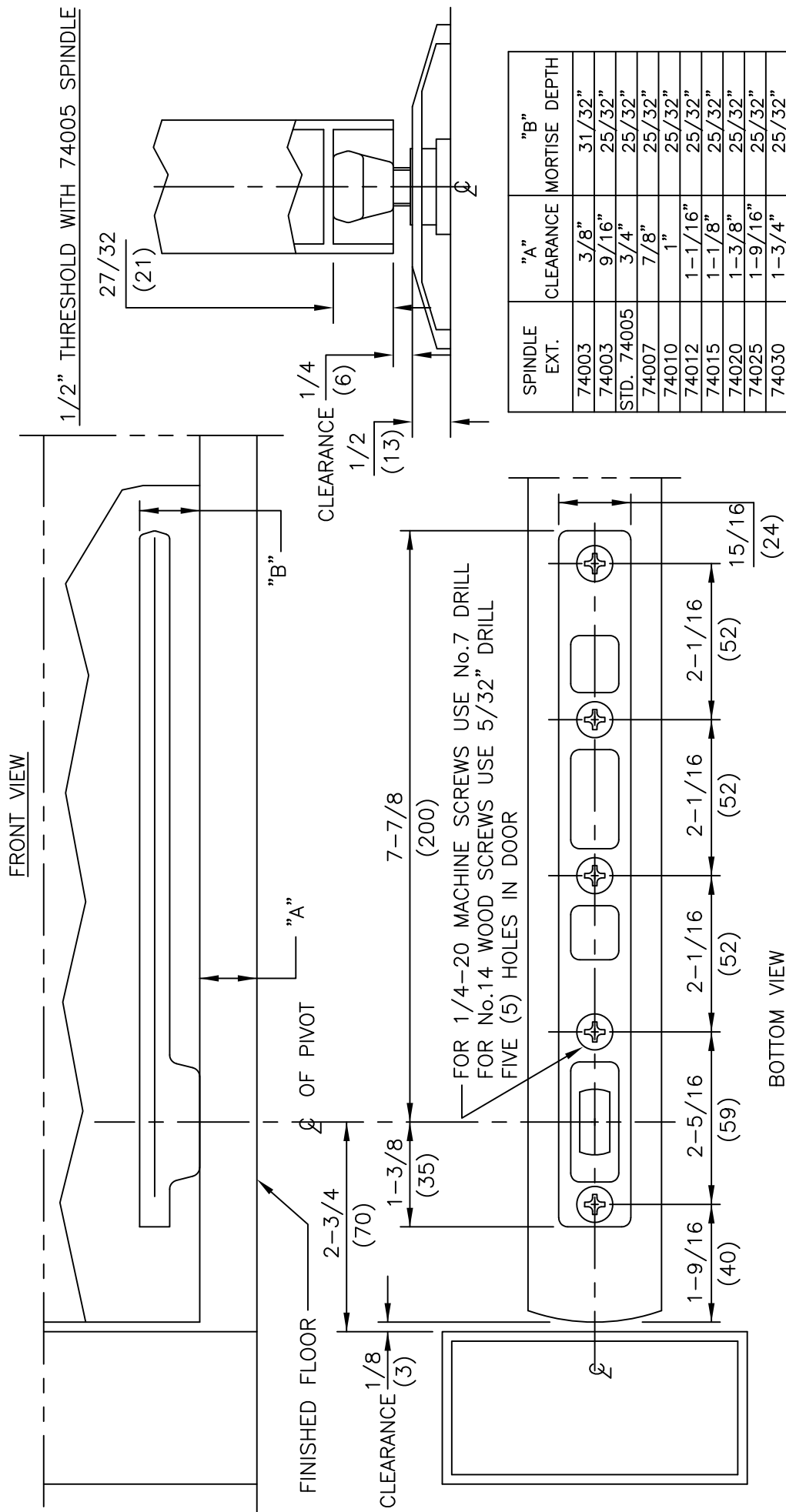
1.2.3 Align bearing with pivot pin.

1.2.4 Engage pivot pin by turning adjustment screw clockwise.

1.2.5 Check to make sure pivot pin is fully engaged in door portion of pivot.

NOTES

1. DO NOT SCALE DRAWING.
2. DIMENSIONS ARE IN INCHES/(MM).
3. ALL NECESSARY REINFORCEMENT FOR ARM BY OTHERS.



ITEM No. 7421
 CENTER HUNG BOTTOM ARM
 FOR USE WITH 7471HD FLOOR BEARING

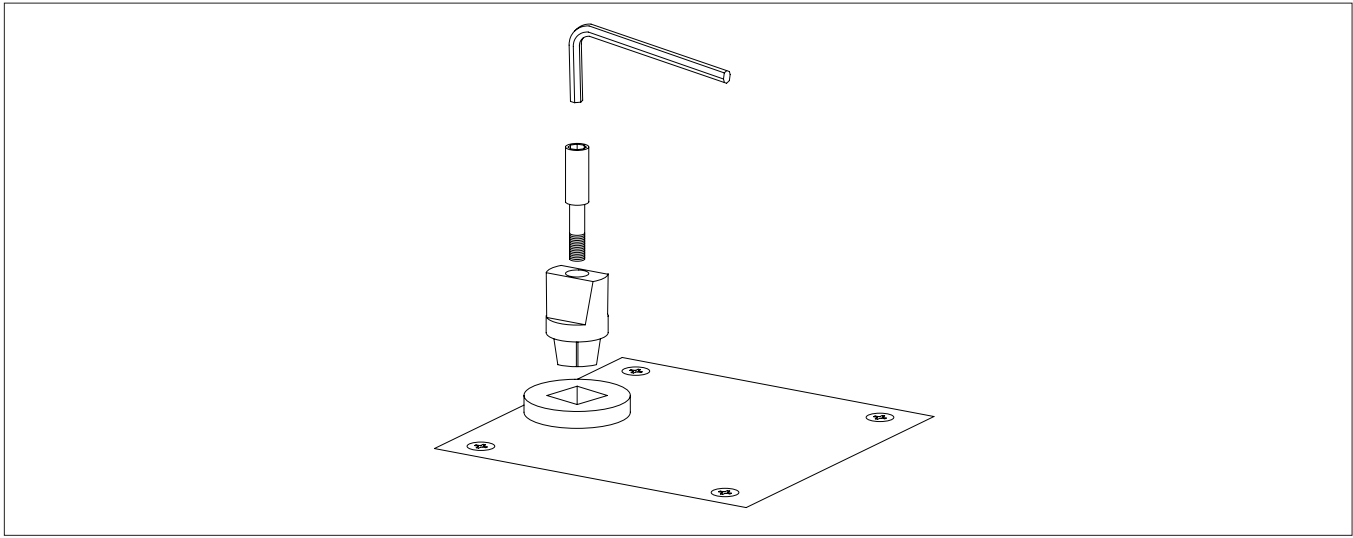


dormakaba USA, INC.
 800 523 8483

Installation Instructions

7471HD Heavy Duty Floor Bearing 3/4" Offset, 1-1/2" Offset, Center Hung

1.1 Install pivot



- 1.1.1 Prepare floor according to templates.
- 1.1.2 Grout in floor bearing with anchors.
- 1.1.3 Attach cover plate.

NOTES:

- **Make sure spindle center line is in proper alignment with top pivot.**
- **Bearing should be grouted in place so that it is square with frame, level in all directions and top of cover plate will be flush with finished floor.**
- **For threshold applications, drill a 1-1/4" diameter clearance hole in the threshold coinciding with the spindle location.**
- **Top of floor bearing cement case is flush with finished floor line for threshold applications.**

1.1.4 Anchor floor bearing first, then the threshold in a usual fashion.

1.1.5 Attach spindle using 5mm hex key.

NOTES:

1. DO NOT SCALE DRAWING.
2. DIMENSIONS ARE IN INCHES \ MM.
3. RIGHT HAND DOOR SHOWN.

